

THE ERIE CANAL IN WESTERN NEW YORK



MUSEUM COMPLEX
ERIE CANAL DISCOVERY CENTER
COL. WM. BOND - JESSE HAWLEY HOUSE

4.6 WESTWARD MOVEMENT AND INDUSTRIALIZATION: New York State played an important role in the growth of the United States. During the 1800s, people traveled west looking for opportunities. Economic activities in New York State are varied and have changed over time, with improvements in transportation and technology. (Standards: 1, 3, 4; Themes: MOV, TCC, GEO, ECO, TECH)

Lessons Developed by the Niagara County Historical Society

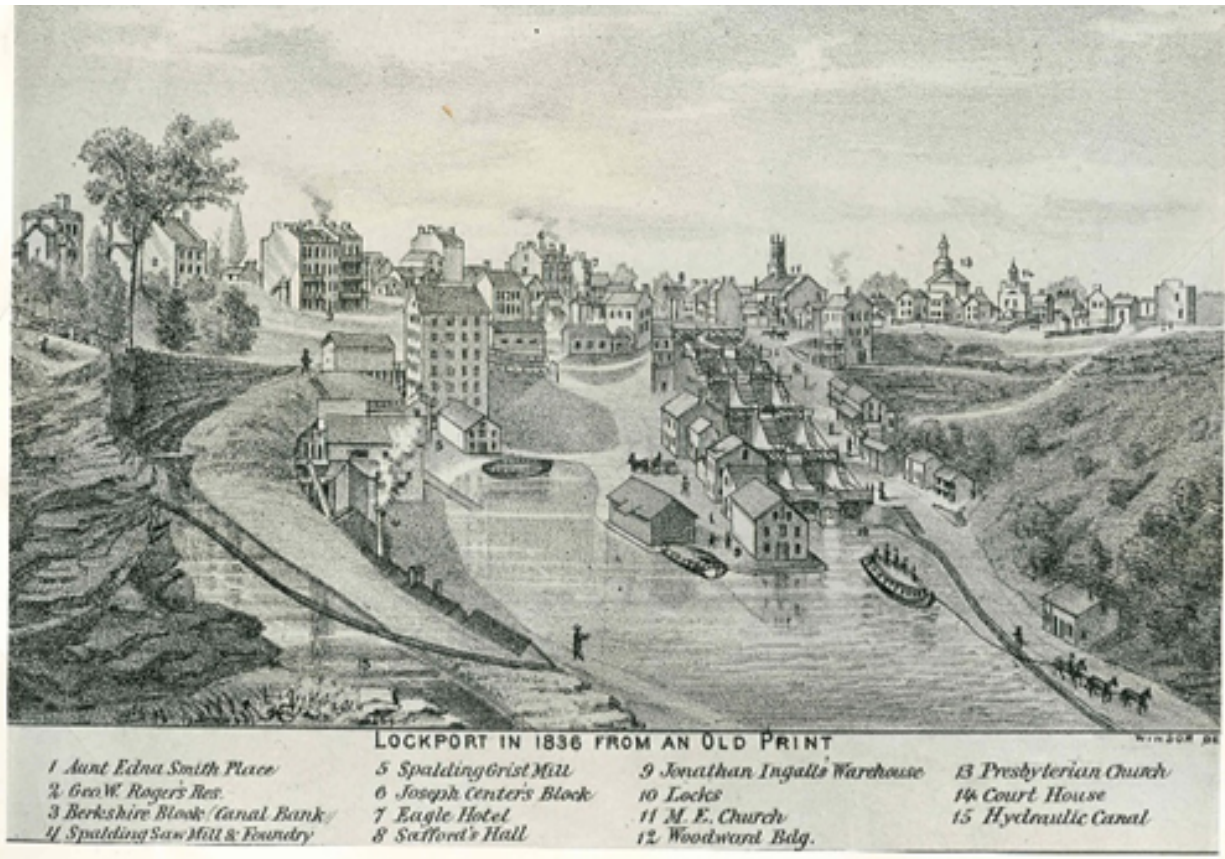
Sponsored by the:



In Partnership with the National Park Service

Niagara County Historical Society Erie Canal Project 2021

Primary Source Set 4.6c: How did the Erie Canal transform a town into a thriving city?



Lockport from an old print, 1836, in *History of Niagara County, N.Y.*, with illustrations descriptive of its scenery, private residences, public buildings, fine blocks and important manufactories and portraits of old pioneers and prominent residents, 1878 in *New York Heritage*:

<https://cdm16694.contentdm.oclc.org/digital/collection/VVN001/id/840>

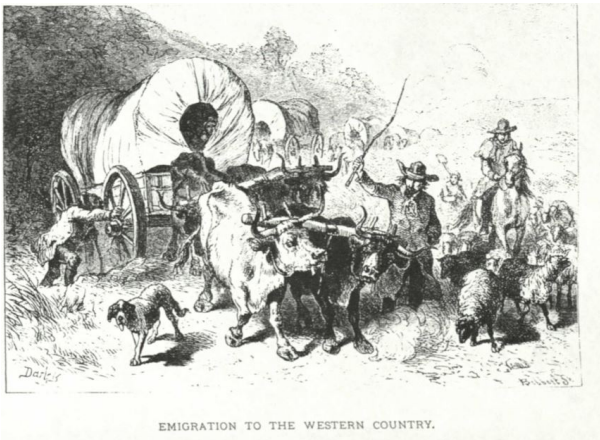


Title: "Walking Wager"

Source: *Peter Piper's Practical Principles of Plain and Perfect Pronunciation*, by Anonymous, Philadelphia

Date Created: 1836 Wikipedia link:

https://en.wikipedia.org/wiki/Pedestrianism#/media/File:Walking_wager_1800_primer_illustration.jpg



Title: Emigration to the Western Country

Source: *The Pictorial Field-book of the War of 1812; or, Illustrations, by Pen and Pencil, of the History, Biography, Scenery, Relics, and Traditions of the Last War for American Independence*. Benson J. Lossing, (New York: Harper & Brothers, 1869) - Vol.2, page 1180

Date Created: c. 1869

Owned by: New York State Library


NYSL link: http://www.nysl.nysed.gov/mssc/eriecanal/lossingimages/lossing_our-country-v2-opp%20p1180_emigration-western-country_oxen-pulling-wagons.pdf



Images of overland travel by horse and oxcart:

<https://www.loc.gov/resource/fsa.8b28218/>

MAIL STAGE



*From Canandaigua to Lewiston,
Three times a Week.*

LEAVES Canandaigua and Lewiston, every Monday, Wednesday and Friday, at 4 o'clock A. M. and arrives at the end of the route the next days at 5 o'clock P. M. It passes thro' the villages of Pittsford, Rochester, Parma, Murray, Senly Creek, &c and in view of the celebrated bridge at Carthage.—The route is chiefly on the famous *Ridge Road* which is equal to any other in the United States.—Persons travelling to Niagara Falls will find this by far the most eligible rout.

No exertion on the part of the proprietors will be spared to render the accommodations to travellers agreeable—good carriages, horses and drivers are provided.

P. M. A regular line of Stages will be established from Lewiston to Buffalo, via Niagara Falls by the 15th day of June next; private conveyance can be had at all times.

May, 28, 1819. 463w*.

Title: Mail Stage From Canandaigua to Lewiston

Source: *Rochester Telegraph*, Rochester, NY

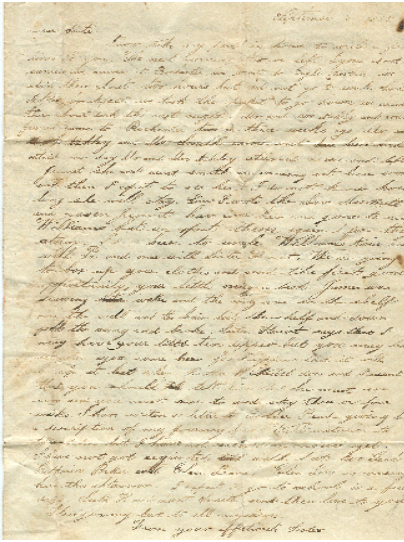
Date Created: May 28, 1819

<http://stagecoachdays.blogspot.com/2011/10/stagecoach-days-in-western-new-york.html>



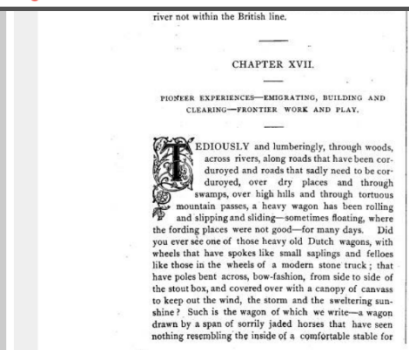
Horse drawn wagon on Lock Street, ca. 1910

<https://cdm16694.contentdm.oclc.org/digital/collection/p15004coll9/id/235/rec/73>



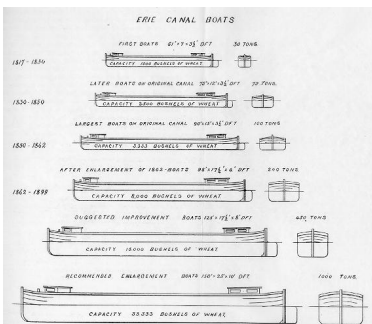
Letter from 11 year old Jane Taft to her sister Frances Taft Root in 1838
Niagara County Historical Society, Atwater Collection

<https://niagarahistory.org/wp-content/uploads/2021/01/JaneTaft-letter14A.jpg>



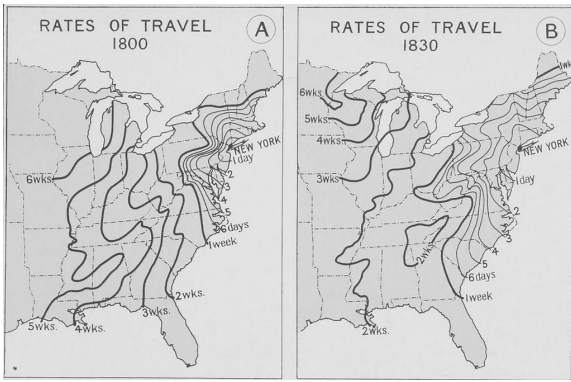
Descriptions of overland and water travel through New York State from History of Niagara County monograph (page 92):

<https://cdm16694.contentdm.oclc.org/digital/collection/VVN001/id/768>



Evolution of boats used on Erie Canal, 1825-1899

<https://www.eriecanal.org/images/misc/1899boat.jpg>



<https://mlpp.pressbooks.pub/americanenvironmentalhistory/chapter/chapter-6-transportation-revolution/>

Comparison of modes of transportation - pdf

<https://www.econedlink.org/resources/transportation-they-say-we-had-a-revolution-part-1/>

A LIST

OF THE PRINCIPAL PLACES ON THE ERIE CANAL, AND THEIR DISTANCE FROM EACH OTHER.

PLACES	DISTANCE FROM		DISTANCE FROM	
	ALBANY	BUCKLE	ALBANY	BUCKLE
ALBANY	0	161	0	161
Buckle	161	0	161	0
Canastota	16	145	16	145
Castleton	32	129	32	129
Chenango	48	113	48	113
Conestoga	64	97	64	97
Delaware	80	81	80	81
Hamlet	96	65	96	65
Hammondsport	112	49	112	49
Hamlet	128	33	128	33
Hammondsport	144	17	144	17
Hamlet	160	1	160	1
Hammondsport	176	0	176	0
Hamlet	192	0	192	0
Hammondsport	208	0	208	0
Hamlet	224	0	224	0
Hammondsport	240	0	240	0
Hamlet	256	0	256	0
Hammondsport	272	0	272	0
Hamlet	288	0	288	0
Hammondsport	304	0	304	0
Hamlet	320	0	320	0
Hammondsport	336	0	336	0
Hamlet	352	0	352	0
Hammondsport	368	0	368	0
Hamlet	384	0	384	0
Hammondsport	400	0	400	0
Hamlet	416	0	416	0
Hammondsport	432	0	432	0
Hamlet	448	0	448	0
Hammondsport	464	0	464	0
Hamlet	480	0	480	0
Hammondsport	496	0	496	0
Hamlet	512	0	512	0
Hammondsport	528	0	528	0
Hamlet	544	0	544	0
Hammondsport	560	0	560	0
Hamlet	576	0	576	0
Hammondsport	592	0	592	0
Hamlet	608	0	608	0
Hammondsport	624	0	624	0
Hamlet	640	0	640	0
Hammondsport	656	0	656	0
Hamlet	672	0	672	0
Hammondsport	688	0	688	0
Hamlet	704	0	704	0
Hammondsport	720	0	720	0
Hamlet	736	0	736	0
Hammondsport	752	0	752	0
Hamlet	768	0	768	0
Hammondsport	784	0	784	0
Hamlet	800	0	800	0
Hammondsport	816	0	816	0
Hamlet	832	0	832	0
Hammondsport	848	0	848	0
Hamlet	864	0	864	0
Hammondsport	880	0	880	0
Hamlet	896	0	896	0
Hammondsport	912	0	912	0
Hamlet	928	0	928	0
Hammondsport	944	0	944	0
Hamlet	960	0	960	0
Hammondsport	976	0	976	0
Hamlet	992	0	992	0
Hammondsport	1008	0	1008	0
Hamlet	1024	0	1024	0
Hammondsport	1040	0	1040	0
Hamlet	1056	0	1056	0
Hammondsport	1072	0	1072	0
Hamlet	1088	0	1088	0
Hammondsport	1104	0	1104	0
Hamlet	1120	0	1120	0
Hammondsport	1136	0	1136	0
Hamlet	1152	0	1152	0
Hammondsport	1168	0	1168	0
Hamlet	1184	0	1184	0
Hammondsport	1200	0	1200	0
Hamlet	1216	0	1216	0
Hammondsport	1232	0	1232	0
Hamlet	1248	0	1248	0
Hammondsport	1264	0	1264	0
Hamlet	1280	0	1280	0
Hammondsport	1296	0	1296	0
Hamlet	1312	0	1312	0
Hammondsport	1328	0	1328	0
Hamlet	1344	0	1344	0
Hammondsport	1360	0	1360	0
Hamlet	1376	0	1376	0
Hammondsport	1392	0	1392	0
Hamlet	1408	0	1408	0
Hammondsport	1424	0	1424	0
Hamlet	1440	0	1440	0
Hammondsport	1456	0	1456	0
Hamlet	1472	0	1472	0
Hammondsport	1488	0	1488	0
Hamlet	1504	0	1504	0
Hammondsport	1520	0	1520	0
Hamlet	1536	0	1536	0
Hammondsport	1552	0	1552	0
Hamlet	1568	0	1568	0
Hammondsport	1584	0	1584	0
Hamlet	1600	0	1600	0
Hammondsport	1616	0	1616	0
Hamlet	1632	0	1632	0
Hammondsport	1648	0	1648	0
Hamlet	1664	0	1664	0
Hammondsport	1680	0	1680	0
Hamlet	1696	0	1696	0
Hammondsport	1712	0	1712	0
Hamlet	1728	0	1728	0
Hammondsport	1744	0	1744	0
Hamlet	1760	0	1760	0
Hammondsport	1776	0	1776	0
Hamlet	1792	0	1792	0
Hammondsport	1808	0	1808	0
Hamlet	1824	0	1824	0
Hammondsport	1840	0	1840	0
Hamlet	1856	0	1856	0
Hammondsport	1872	0	1872	0
Hamlet	1888	0	1888	0
Hammondsport	1904	0	1904	0
Hamlet	1920	0	1920	0
Hammondsport	1936	0	1936	0
Hamlet	1952	0	1952	0
Hammondsport	1968	0	1968	0
Hamlet	1984	0	1984	0
Hammondsport	2000	0	2000	0

Title: A list of the principal places on the Erie canal, and their distance from each other
 Source: T. Buchanan (Utica, N. Y., R. W. Roberts, printer, c1846) in An American Time Capsule, Library of Congress, Rare Book and Special Collections Division, Printed Ephemera Collection

Date Created: c. 1846
<http://hdl.loc.gov/loc.rbc/rbpe.1200020c>

A TABLE

Showing the Toll per Barrel on Flour, the Toll per 100 lbs. on all property passing a mile, per 1000 lbs. per mile, and the Toll per 100 lbs. on Merchandise, and all property passing 10 and 1 mile per 1000 lbs. per mile, per 1000 lbs. on the Erie Canal.

BY T. BUCHANAN, JR., ACCOUNTANT.

A table showing the toll per barrel of flour; the toll per 100 lbs per mile; and the toll per 100 lbs. on merchandise, ...

T. Buchanan (Utica, N. Y., R. W. Roberts, printer, c1846)

An American Time Capsule, Library of Congress, Rare Book and Special Collections Division, Printed Ephemera Collection

<https://www.eriecanal.org/images/misc/tolls.jpg>

63

To and from Albany and Buffalo, by the Erie Canal.

Passengers by the Canal will reach Buffalo from Albany, or Albany from Buffalo, if traveling by the boat, in about six days. The usual rate of fare is 1 cent per mile without, or 14 cents with board. Traveling by packets, passengers from and to Buffalo and Schenectady arrive in about 3 1/2 days. No packets ply between Albany and Schenectady.

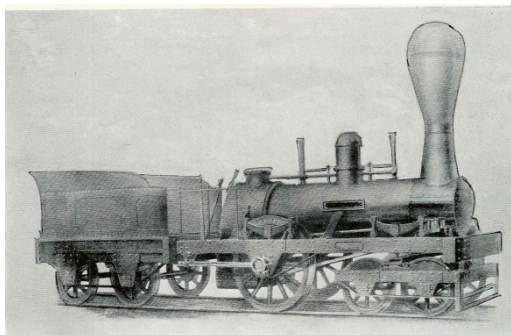
Albany	Canastota	2 146	Port Gibson	3 235
West Troy	New Boston	4 150	Palmyra	5 240
Junction	Chittenango	3 153	Painport	12 252
Schenectady	Kidwiler	5 158	Fulton's Basin	1 253
Amsterdam	Manlius	4 162	Rttsford	6 259
Schoharie Creek	Orville	3 165	Rochester	10 269
Fultonville	Syracuse	6 171	Spencer's Basin	12 281
Spraker's Basin	Greiderberg	2 173	Adams	3 284
Canajoharie	Nine-mile Creek	5 174	Brookport	5 289
Fort Plain	Camillus	1 179	Holley	5 294
Little Falls	Canton	5 184	Hartston	4 298
Herkimer	Jordan	6 190	Albion	5 304
German Flats	Weed's Port	6 196	Eagle Harbour	3 307
Frankfort	Centre Port	1 197	Knowlesville	4 311
Utica	Port Byron	2 199	Medina	4 315
Whiteboro	Montezuma	6 200	Wadsworth	6 321
Oriskany	Lockpit	6 211	Lockport	12 333
Rome	Clyde	5 216	Pendleton	7 340
New London	Lysane	9 225	Fancwanta	12 352
Loomis	Lockville	6 231	Black Rock	9 361
Ononda Creek	Newark	1 238	Buffalo	3 364
Lenox Basin		3 144		

Cleveland to Portsmouth, by Ohio Canal.

Boston,	21	Dover	10	93	Lancaster		
Wiles	9	20	New Philadelphia	4	97	Canan	11 200
Old Portage	2	32	New-cumers			Columbus side	
Akron	6	38	Town	21	118	cut	18 218
New Portage	6	44	Cochoston	17	132	Bloomfield	10 228
Clifton	8	52	Leansville	14	132	Brookville	8 236
Massion	12	64	Newark	44	176	Chillicothe	22 248
Bethlehem	6	71	Hebron	9	185	Piketon	25 253
Bolivar	9	80	Lacking Summit	4	189	Lucasville	14 297
Zoar	3	83				Portsmouth	12 309

"To and from Albany and Buffalo, by the Erie Canal", 1846.

<https://www.eriecanal.org/images/misc/fares1846.jpg>



Strap Railroad Locomotive

The Old Lockport and Niagara Falls Strap Railroad, Raymond F. Yates, Published by the Niagara County Historical Society, 1950

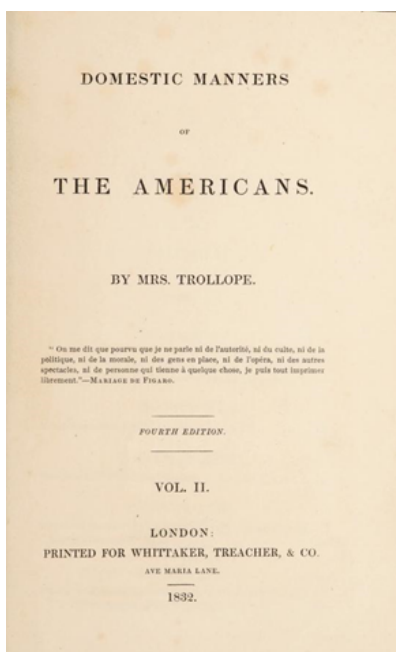
Niagara County Historical Society

<https://niagarahistory.org/wp-content/uploads/2021/01/Strap-Railroad-Locomotive.jpg>



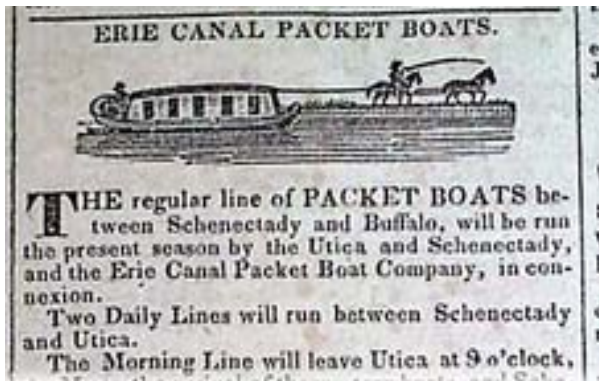
Train Station with telegraph

<http://hdl.loc.gov/loc.rbc/juv.48867>



Trollope, Frances, *Domestic Manners of the Americans*, Whittaker, Treacher & Co., London, 1832, p. 252-253.

https://archive.org/details/b29350384_0002/page/n7/mode/2up?q=Lockport



Erie Canal Packet Boats

Advertisement from "American Traveller," Boston, May 30, 1828.

<https://www.eriecanal.org/boats/AmericanTraveller-1828.jpg>

"The Ridge road was just being cut through & often they [her parents] had to stop & wait or take hold & help before they could proceed...Thus they progressed slowly toward their destination in the wilderness where they built a shanty, moved their household goods & commenced living... At that time the Lake Road was not laid out east of Father's [cabin] in its present place but they began to alter it as people began to settle & Father began to think of building on the Road & he could get sawing done as he had previously had to hew out his flooring & make his own shingles...In the fall of 1823 Mother went east to visit her parents & took my youngest sister & myself with her. I thought that the first great event of my life. I was 10 years old then & had never been out of the county. We went with a horse & wagon. I think we were four or five days on the road as Mother made visits on the road among relatives & acquaintances..."

Excerpt from the "Autobiography of Delilah Wisner Merritt (1813-1899), A Town of Newfane Pioneer," Newfane Historical Society Publication, Star Printing Incorporated, Newfane, NY, 1975

<https://niagarahistory.org/wp-content/uploads/2021/01/Delilah-Wisner-Merritt4A.jpg>

CREDITS AND RESOURCES

SPECIAL THANKS TO:

ANN MARIE LINNABERRY
HEIDI ZIEMER
RICH PYSZCZEK

NIAGARA COUNTY HISTORICAL CENTER
WESTERN NEW YORK LIBRARY RESOURCES COUNCIL
BUFFALO PUBLIC SCHOOLS & NFCSS PRESIDENT

LESSON RESOURCES:

NIAGARA COUNTY HISTORICAL CENTER

<https://niagarahistory.org>

LIBRARY OF CONGRESS

<https://www.loc.gov/programs/teachers/about-this-program/>

NEW YORK STATE LIBRARY

<http://www.nysl.nysed.gov>

NEW YORK STATE ARCHIVES

<http://www.archives.nysed.gov/education>

NEW YORK HERITAGE

<https://nyheritage.org>

ERIE CANAL WEBSITE

<http://eriecanal.org>

BUFFALO ARCHITECTURE AND HISTORY

<https://buffaloah.com>



MUSEUM COMPLEX
ERIE CANAL DISCOVERY CENTER
COL. WM. BOND - JESSE HAWLEY HOUSE



WESTERN NEW YORK
LIBRARY RESOURCES COUNCIL

Questioning existing practices.
Testing new ideas.
WNYLRC: a leader in library innovation.

Niagara Frontier Council for the Social Studies



WWW.NFCSS.ORG